

**childrenfirst**  
growing potential

## Shelley Outside School Hours

# Vacation Care Spring 2025

**FULL FEE**  
(before Child Care Subsidy)

**\$82** Inclusive of all  
activities and  
excursion

Fee after childcare Subsidy: \$13.05 - \$47.85. Approximation only,  
fee will depend on your subsidy percentage with Centrelink.

**Monday**  
29/09/2025

**Tuesday**  
30/09/2025

**Wednesday**  
01/10/2025

**Thursday**  
02/10/2025

**Friday**  
03/10/2025

WEEK ONE

### Excursion William Lawson



Departure: 10:30am  
Return: 1:00pm  
Transport: Walking

Pack your robes and wands - it's time for Wizard School! We'll make our own wands, brew magical potions (safe for Muggles!), and test our skills in the Spell Casting Obstacle Course. Compete in House Points challenges, get sorted by the Sorting Hat, and enjoy a day of magical fun and adventure!

### In House Mission Impossible



Your mission, should you choose to accept it... is to become a top-secret agent! Crack codes, solve escape-room style puzzles, and create your own spy ID badge. Can you complete the challenges before time runs out?

### Workshop Colours of the World - Indigenous



Celebrate culture, creativity, and connection! Join in traditional Indigenous games, paint your own wooden boomerang or colourful rock art, and make a rain stick to take home. Enjoy music, dancing, and learning about the world's oldest living culture in a hands-on way.

### In House Mini Masterchef



Whisks at the ready! Create tasty snacks, take on the blindfold taste test, and decorate your own culinary masterpiece in our cooking challenge. Play café in our roleplay corner and test your knowledge in the whipped cream quiz challenge

### Excursion Australian Reptile Park



Departure: 8:30am  
Return: 2:30pm  
Transport: Private Bus.

Get up close to some amazing reptiles at the Australian Reptile Park! Learn all about scaly, slithery creatures, enjoy reptile-themed activities, and make your own reptile mask to take home. A day full of adventure, learning, and animal encounters!

**Monday**  
06/10/2025

**Tuesday**  
07/10/2025

**Wednesday**  
08/10/2025

**Thursday**  
09/10/2025

**Friday**  
10/10/2025

WEEK TWO

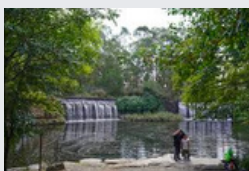
*Sorry*

### SPRING HAS SPRUNG... INTO A PUBLIC HOLIDAY!

Our team will be off frolicking in the sunshine (or catching up on laundry, let's be honest).

We'll be back the next day, fresh as daisies and ready for more fun and chaos, the good kind!

### Excursion Island Adventure



Departure: 10:15am  
Return: 2:15pm  
Transport: Private Bus.

Grab your sunscreen — we're heading to a tropical-themed day of fun! Build your own shelter, play coconut bowling, make delicious smoothies, and create sandy masterpieces with sand art and kinetic sand.

### In house Eco Heros



Become a planet protector! Make awesome recycled crafts, create seed bombs to grow at home, join a nature hunt, and get your hands dirty gardening. A fun-filled day celebrating our environment and how we can help it thrive.

### In House Wheels on the Move



Bring your bike, scooter, or skateboard for a rolling good time! Decorate your wheels, tackle the obstacle course, play wheel bingo, and learn how wheels work.

REMINDER:  
Don't forget your helmet!

### Workshop Bubble Bonanza



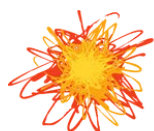
It's bubbles and bounces all day long! Make your own bubble wand, try giant bubble play, paint with bubbles, and race to pop as many as you can.

Plus, enjoy hours of fun on the jumping castle!

For more information, comments, concerns or feedback  
[e] [sosh@childrenfirst.asn.au](mailto:sosh@childrenfirst.asn.au) or [p] 0413 542 974

**BOOK NOW!**





**childrenfirst**  
growing potential

**Shelley Outside  
School Hours**

# Vacation Care Spring 2025

**FULL FEE**

(before Child Care Subsidy)

**\$82**

Inclusive of all  
activities and  
excursion

Fee after childcare Subsidy: \$13.05 - \$47.85. Approximation only,  
fee will depend on your subsidy percentage with Centrelink.

**Monday**

13/10/2025

**Tuesday**

14/10/2025

**Wednesday**

15/10/2025

**Thursday**

16/10/2025

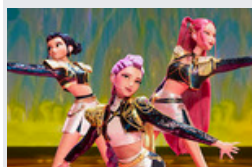
**Friday**

17/10/2025

WEEK THREE

In House

**Fairies & Fantasy**



Step into a world of magic and wonder! Join a dragon egg hunt, watch the action-packed K-Pop Demon Hunters movie, and enjoy a day full of fairy-tale fun. Wings and wands welcome - adventure awaits!

*Sorry*

**THE FUN  
HAS TO  
END—  
SCHOOL'S  
BACK!**



For more information, comments, concerns or feedback  
[e] [sosh@childrenfirst.asn.au](mailto:sosh@childrenfirst.asn.au) or [p] 0413 542 974

**BOOK NOW!**







**childrenfirst**  
growing potential

**Shelley Outside  
School Hours**

# Important things to Remember

## Hats & Clothing

Please ensure your child brings a hat for outdoor play. Enclosed shoes and shirts with sleeves are recommended.

## Food

Pack morning tea, lunch, afternoon tea, and snacks. Hot lunches are not suitable on excursion days.

## Allergy Awareness

We are an allergy-aware centre.

## Electronic Devices

Handheld devices are allowed (no Wi-Fi access, age-appropriate games). Staff are not responsible for lost or damaged items. Mobile phones are not permitted.

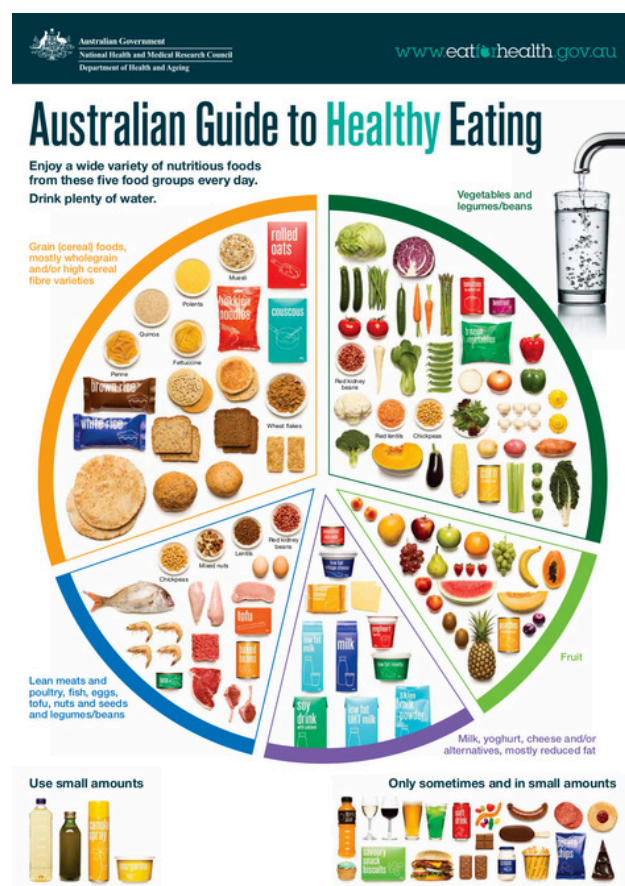
## Absences

Notify absences via OWINA, phone, or text message. Fees apply if notice is not provided.

## Behaviour

Unsafe or absconding behaviour may result in you being contacted to collect your child if they are placing others at risk.

**Please remember the  
food circle when packing  
your child's lunch**



[Read more here](#)

